



**Brixton Hill, Brixton, SW2**

1 bedroom flat - purpose built for sale

**£450,000**

Leasehold

## Property Details

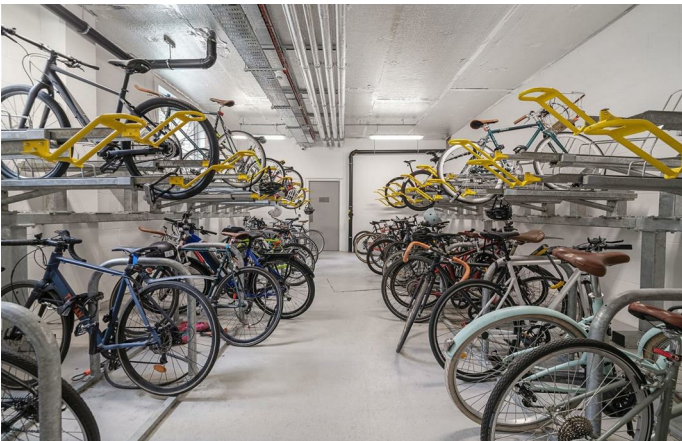
A beautifully presented one double bedroom apartment with a private South-East facing terrace and far-reaching views, set within Somerset Place, a sought-after luxury building on Brixton Hill. Positioned on the eighth floor, this bright home enjoys excellent natural light and impressive outlooks towards Brockwell Park, Herne Hill and the distant City skyline. The spacious open-plan reception room provides an ideal setting to relax, cook, dine and entertain, with large glass doors drawing in natural light and framing the elevated views. A sleek contemporary kitchen is fully integrated within modern cabinetry, offering generous preparation space while still allowing room for dining and a comfortable lounge area. Glass doors open onto the private terrace, perfect for morning coffee or evening drinks to the twinkling lights of the City. The recently decorated double bedroom is bright with windows on two aspects and fitted wardrobes, whilst the bathroom features a bathtub with overhead shower. Further benefits include underfloor heating, hallway storage, lift access, time remaining on the build warranty, bike storage, residents' garden and further terrace.

## Features

- Eighth floor setting
- One double bedroom
- South-East facing private terrace
- Impressive views
- Underfloor heating throughout
- Resident's roof terrace and garden
- Secure bike storage and lift
- Central Brixton, moments from Brixton tube station and Brixton Village
- A short stroll to Brockwell Park

Council tax band C    EPC rating B (84)

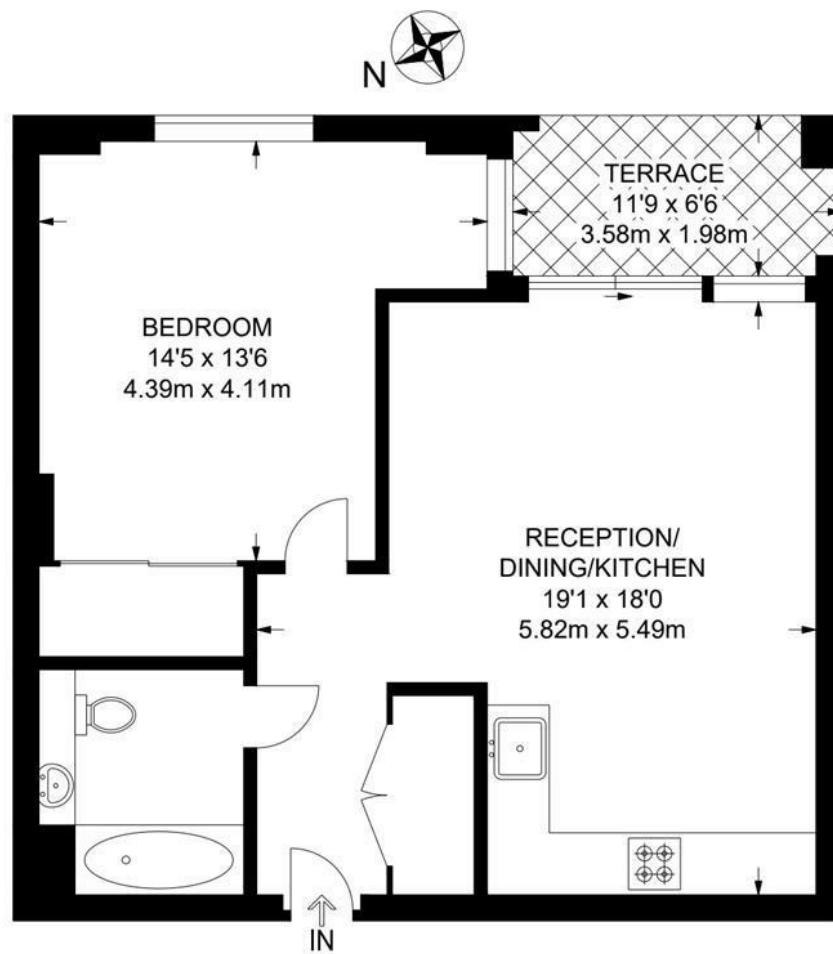




Brixton Hill, Brixton, SW2

**Brixton Hill, SW2**  
**1 Bedroom Flat**

APPROXIMATE GROSS INTERNAL AREA: **552 SQ FT / 51.3 SQ M**



**EIGHTH FLOOR**



While we try our very best, floor plans are produced as a guide only and we take no responsibility for the precise accuracy with which any property is represented.

Brixton Hill, Brixton, SW2

